

## MICROWAVE-ASSISTED EXTRACTION OF INULIN FROM JERUSALEM ARTICHOKE AND PARTIAL ACID HYDROLYSES

A. M. D. Alabadi  
Researcher

S. ch. Abood  
Prof.

Dept. Food Science –Coll. Agric., University of Baghdad

abaasmoarab@yahoo.com

Sabriabood1954@gmail.com

### ABSTRACT

The Recent study aimed to identify the optimum conditions for inulin extraction from jerusalem artichoke tuber (JAT) powder using microwave assisted extraction method, and partially hydrolysis of purified inulin for producing fructooligosaccharide (FOS) using citric acid & microwave energy. The extraction conducted at different temperature (90 – 95) °C at (700 W/5min, 450w/8 min and 350w/14 min). The extracted inulin was concentrated to (50 – 60) % of original volume using rotary evaporator, and purified by lime method. The purified inulin extract was concentrated to 32 brix and mixed with acetone (3:1 acetone : extract), kept for 24 h at 4 °C, then centrifuged at 10000g / 15 min., the precipitate dried at 55 °C. Acid hydrolysis of purified inulin carried out at different pH values (1.5, 2.5 & 3.0) at (90 ±2) °C. Aliquot of inulin hydrolysate were taken after (5, 10, 15, 20, 25 & 30) min. and subjected to qualitative analysis by RP-HPLC and TLC. The obtained results indicated that the microwave assisted extraction at 700 W/ 5 min. / 95 °C was superior as compared to the rest. The yield of extracted inulin was about 39.61 % and the extraction efficiency was 94.31 %, while the optimum condition for inulin acid hydrolysis appeared to be at 90 °C/ 15 min at pH 2.5 and 450 W. The qualitative analysis using (RP-HPLC & TLC) showed that the DP of inulin units ranged from (2 - 35) and for FOS ranged from (2 – 9) unit.

Keywords: hydrolysate, fructooligosaccharides, RP-HPLC, TLC, citric acid, microwave energy.

\*Part of Ph.D. Dissertation of the 1<sup>st</sup> author.

العبادي وعبود

مجلة العلوم الزراعية العراقية - 2020- 410-401:(1)51

استخلاص الانبولين من مسحوق درنات الالمازة باستخدام طاقة المايكرويف وانتاج سكريات الفركتوز القصيرة بالتحلل الجزئي الحامضي للانبولين

صبري جثير عبود  
استاذ

عباس مرعب داخل العبادي  
الباحث

قسم علوم الأغذية - كلية الزراعة - جامعة بغداد

المستخلص

هدفت الدراسة الحالية الى تحديد الظروف المثلى لاستخلاص وتنقية الانبولين من مسحوق درنات الالمازة المحلية باستعمال المايكرويف عند مستويات طاقة بلغت (700 واط/ 5 دقيقة، 450 واط/ 8 دقيقة، 350 واط/ 14 دقيقة) بدرجة حرارة استخلاص تراوحت (90 - 95) م ونسبة خلط (1 : 30) (وزن/حجم). وكذلك تحديد الظروف المثلى لعملية التحلل الحامضي الجزئي عند درجات مختلفة من الاس الهيدروجيني (1.5 , 2.5 , 3.0) للانبولين المنقى باستعمال المايكرويف عند طاقة 450 واط (90 م±2) بمدد زمنية بلغت (5, 10, 15, 20, 25 و 30) دقيقة. وتم التشخيص النوعي للانبولين المستخلص ونواتج التحلل باستخدام تقنية RP-HPLC و TLC. بلغت اعلى حصيله للانبولين 39.61 % عند الاستخلاص بطاقة 700 واط/ 5دقيقة وكفاءة استخلاص تصل الى 94.31 %، وفيما يخص الظروف المثلى لتحلل الانبولين تفوقت المعاملة التي كان لها اس هيدروجيني 2.5 ووقت تحلل 15 دقيقة في النسبة المئوية لسكريات FOS. أظهر الكشف النوعي بتقنيتي (RP-HPLC و TLC) ان درجة البلمرة للانبولين المستخلص تتراوح ما بين (2 - 35) وحدة ولسكريات FOS تتراوح ما بين (2 - 9) وحدات.

الكلمات الافتتاحية: متحللات, سكريات الفركتوز القصيرة, RP-HPLC , TLC , حامض الستريك, طاقة المايكرويف.

\*البحث مستل من أطروحة دكتوراه للباحث الاول

## INTRODUCTION

Inulin is a linear polymer (polydisperse) of fructose linked by  $\beta$  (2  $\rightarrow$  1) glycosidic bond and terminated with a D-glucose molecule linked to fructose by an  $\alpha$  (1  $\rightarrow$  2) glycosidic linkage, as in sucrose (22). Inulin serves as storage carbohydrate in many members of the *Asteraceae* family such as *Helianthus tuberosus* (Jerusalem artichoke), *Cichorium intybus* (chicory), *Tarax-acum officinalis* (dandelion) and *Inula helenium* (elecampane) (10). Although today, chicory roots is the main crop used for industrial production of inulin, the pursuit of improving the extraction quality of other crops does not bring to a stop since. Jerusalem artichoke tubers (JAT) is containing about 14 to 19% of inulin (from fresh weight) so it can be a valuable source of inulin (2). Inulin extracted from natural sources is characterized by a degree of polymerization (DP) ranging (2 - 60) units. The oligosaccharides of inulin with DP less than 10 units called of fructo-oligosaccharide (FOS) is one of the bestknown prebiotics (25). Inulin and FOS are considered as functional food that is beneficial to human health through decrease the risk of some diseases like colon cancer, intestinal infections, diabetes, constipation, obesity and increase intestinal absorption of some minerals such calcium and magnesium in small intestine (17, 30). Several methods for inulin extraction from fresh JAT have been adopted (13, 28). These methods are time consuming with low extraction efficiency. Therefore it is necessary to develop methods for inulin extraction which improve the extraction efficiency (19). Microwave assisted extraction [MAE] is a process of using microwave power to heat the solution through the extraction of the sample in order to separate analytes from the sample matrix into the solvent, it is promising alternative method to extracted bioactive compounds from plant sources (43). The highly localized pressure and temperature can accelerate the migration of target compounds from the sample to the extraction solution, thus increases the extraction efficiency compared to conventional extracts. The extraction efficiency by microwave increased because it's volumetric heating effect, leading a higher temperature of solvent result due to dipole rotation of the

solvent in the microwave field. Thus increasing the solubility of biocompounds (42). This study was aimed to optimize the conditions for inulin extraction from JAT powder and for partially hydrolysis of purified inulin for producing fructo-oligosaccharides (FOS) using citric acid and microwave power.

## MATERIALS AND METHODS

### Chemicals and reagents

All chemicals and reagents were of analytical reagent grade. These included potassium iodide, sodium hydroxide, Sodium acetate, tri-calcium phosphate, sodium periodate, dinitrosalicylic acid, resorcinol and ascorbic acid (Merck, Germany). Citric acid, concentrated hydrochloric acid, maltodextrin and concentrated sulfuric acid (BDH - England), Glucose, Fructose, Sucrose, Lactose, cellobiose, raffinose and 1-kestose were obtained from (Sigma-Aldrich, St. Louis, MO, USA) and (Merck Germany), Standard chicory inulin (Sigma, Berlin, Germany). Ethanol, butanol, aniline, diphenylamine, acetone, phosphoric acid and glacial acetic acid were obtained from (Alpha Chemicals-India). Chromatographic silica gel 60 (20 cm $\times$ 20 cm) pre-coated glass plates were obtained from (Merck, Germany).

### Determination of free fructose, total fructose & inulin content in JAT

Free fructose, total fructose & Inulin content were determined according to the method described by Saengkanuk *et al.* (33) using following formula:

$$I = k (F_{\text{tot}} - F_f)$$

Where (I) is the inulin content, ( $F_{\text{tot}}$ ) is total fructose content, ( $F_f$ ) is free fructose, and ( $k$ ) is a correction factor for the glucose part of the inulin and for the water loss during hydrolysis. In this study,  $k = 0.995$  is adopted, this value is recommended for the unknown DP inulin.

### Preparation of JAT powder

The JAT purchased from local market, washed with tap water to remove dust and other undesirable materials. The cleaned JAT was peeled and cut into slices 2 mm thick pieces. In order to avoid enzymatic browning, the slices were immersed in acidified boiled water (0.1% w/w ascorbic acid) and left for (2 – 3 min.) to obtain white inulin powder, then the JAT slices were dried at 60 °C for 10 h in an oven, milled and sieved through an (50 mesh)

sieve. The powdered JAT was kept in dry place, until extraction time (36).

#### **Microwave-assisted extraction of Inulin**

Inulin was extracted from JAT powder using a Microwave (silvercrest - German) at a frequency of 50 Hz's with six power settings according to Ruo-ling (32) method, with some minor modifications. Extraction of Inulin from JAT powder carried out as follows:

- (a). Microwave power 700W, solid to liquid ratio (1 : 30) (w/v) and extraction time 5 min
- (b). Microwave power 450W, same mixing ratio and extraction time 8 min
- (c). Microwave power 350W, same mixing ratio and extraction time 14 min

The extraction process was conducted in duplicate. The obtained extracts were filtered through Muslin cloth and filter paper (Whitman No. 1), the residue of JAT was re-extracted under the same conditions, then all filtrate were concentrated to 50-60% of the original volume using rotary evaporator. The extract was turbid due to the presence of protein, pectin, and cell wall materials. These impurities were removed according to method described by Pasephol *et al.* (28). The Inulin extract was concentrated to 32°B and precipitated according to Ku *et al.* (20) method. Acetone was used at ratios of (3:1 v/v), then kept for 24 h in a refrigerator at 4°C, centrifuged at 10000g for 15 min, the precipitated inulin was taken and dried in an oven at a temperature of 55°C.

#### **Determination of inulin yield**

Inulin yield (%) was calculated according to the following eq.

$$Y = (mI/mJAT) \times 100 \quad (\text{Temkov } et al. 38)$$

Where, mI is the inulin mass obtained from the extraction and mJAT is the mass of artichoke tubers taken for the extraction.

#### **Extraction and determination of pectin**

Pectin was extracted from JAT powder following the method described by Liu *et al.* (21), and the yield of pectin was calculated using the following formula equation:

$$\text{Pectin yield (\%)} = (m_1 / m_2) \times 100$$

Where ( $m_1$ ) (g) is the weight of dried pectin, ( $m_2$ ) (g) is the weight of dried material

**Inulin hydrolysis for producing FOS:** Partial hydrolysis of purified Inulin carried out due to method described by Fontana *et al.* (12).

Purified inulin solution (5%) was used to prepare the working solution with different pH values being (1.5, 2.5 and 3.0); citric acid solution 10 % was used to adjust the pH of the above solutions. All solutions were heated to (90±2) °C using microwave power 450W for time periods (5, 10, 15, 20, 25 & 30) min. After the partial hydrolysis of inulin, the pH of the hydrolysate was adjusted to 7 using calcium hydroxide, the hydrolysate clarified (the salts precipitated) using the method described by Heding *et al.* (15). The supernatant was concentrated to 32 B°, FOS and inulin precipitated according to Ku *et al.* (20) method with some modifications. Acetone was used at ratios of (4:1 v/v), then kept for three days in a refrigerator at 4°C, centrifuged at 10000g for 15 min. The precipitate was washed with (60:40) (water: acetone) solution and centrifuged again at 10000 rpm for 10 min., then mixed with 10 ml distilled water, 1g of maltodextrin and 0.01g tri-calcium phosphate. The whole mixture placed in a drying oven at 110°C for 75 min to remove the remaining solvent then complete the drying at 55°C (35). The percentage of (FOS & inulin) remaining after inulin hydrolysis was calculated according to Ngampanya *et al.* (26) method, using the following equation:

#### **Determination of total carbohydrate**

Phenolsulphuric acid method was used to estimate total carbohydrate (9) using D-Fructose for standard curve preparation.

#### **Determination of reducing sugar**

Dinitrosalicylic acid (DNSA) method was used to estimate reducing sugar using D-Fructose for standard curve preparation (23).

#### **Determination of free fructose**

Free Fructose was determined by resorcinol reagent method using D-Fructose as standard (4).

#### **Determination of moisture content**

The moisture content was determined using oven at 105 °C, 2 g of sample placed in drying oven until gaining a constant weight (1).

#### **Determination of hydroxymethylfurfural (HMF)**

HMF content was determined using White (41) method. The yield of HMF was calculated using the following formula:

$$\text{HMF (mg /100 g)} = (A_{284} - A_{336}) \times 21.39 \times W \times D/W$$

$A_{284}$  = absorbance at 284 nm

$A_{336}$  = absorbance at 336 nm

21.39 = Constant

D = dilution factor, in case dilution is necessary

W = Weight in g of the sample

### HPLC analysis

Sample analysis was performed using RP-HPLC Model LC-2010 a HT. UV-detector 190 nm. Equipped with a quaternary pump and Empower software. An NUCLEODUR 100 – 5 NH2 column (4.6 x 250 mm i.d.) was used at a column temperature of 40°C. The mobile phase was mixture of acetonitrile/water (75:25) (v/v) and flow rate of 1.4 ml/min. The sample injection volume was 10 µl. Using (Fructose, Glucose, Sucrose, Cellobiose, raffinose, 1-Kestose and Inulin from Chicory root) as standards (31).

### Thin-layer chromatography identification

The qualitative identification of inulin and FOS was performed by (TLC) before and after hydrolysis of inulin. Using (Fructose, Glucose, Sucrose, 1-Kestose and Inulin from Chicory root) as standards. Phase ascension is composed of a mixture of solvents: (butanol–ethanol–water) (5:3:2) (v: v: v). after drying the plate, the spots were visualised by spraying (aniline-diphenyl-amine–phosphoric acid–acetone) (1:1:5:50) (v: w: v: v), followed by drying at 80 °C for 10 min until the spots appear clearly (29).

### Statistical analysis

The data were statistically analyzed by the (LSD) value at 0.05 probability level as described in (13)

## RESULTS AND DISCUSSION

### Chemical composition of JAT

Table 1 shows the chemical composition of local JAT (fresh & powder) which included (moisture, total solid, total carbohydrates, inulin, sucrose, reducing sugar and pectin). The total carbohydrate percentages were (14.20% & 61.74%) in fresh and dry JAT respectively. These amounts are consistent with Bekers *et al.* (6) findings who reported that the total carbohydrate content in different varieties of JAT powder was ranged (62.8% - 64.5%). whereas in fresh JAT was 14.97% (5). The percentage of inulin in experimental JAT (fresh & powder) were (9.66 % & 42%) respectively. This is in line with Dias *et al.* (8)

findings who reported that JAT powder contains a high percentage of inulin ranging from (40% - 60%). Sahar (34) stated that inulin content in fresh JAT was 9.60%. The differences in inulin percentages are due to the varieties, degree of polymerization, harvest date, storage and the postharvest extraction methods. The high content of inulin makes JAT an important plant source for the production of inulin and FOS at the commercial level. The results in Table 1 also indicate that the moisture content of JAT (fresh & powder) were (77.0% & 6.37%) respectively, these results are consistent with Munim *et al.* (24) finding who stated that the moisture content in fresh JAT was 78.01%. Gaafar *et al.* (13) found that the moisture content in JAT powder was 6.36%. The percentage of pectin in JAT (fresh & powder) were (3.29 % & 14.30%) respectively. Our results are in line with those of Toshkov *et al.* (39) who found that the pectin content in JAT powder was 14.80 %. In recent study the percentage of reducing sugar and sucrose in JAT powder were (2.13% & 3.31%) respectively. While in fresh JAT, those values were (0.49% & 2.13%) respectively. Our findings were lower than Barta & Patkai (5) results who reported that JAT powder contained (1.72% to 2.55%) reducing sugar and (3.50% to 9.45%) sucrose.

**Table 1. Chemical composition of JAT**

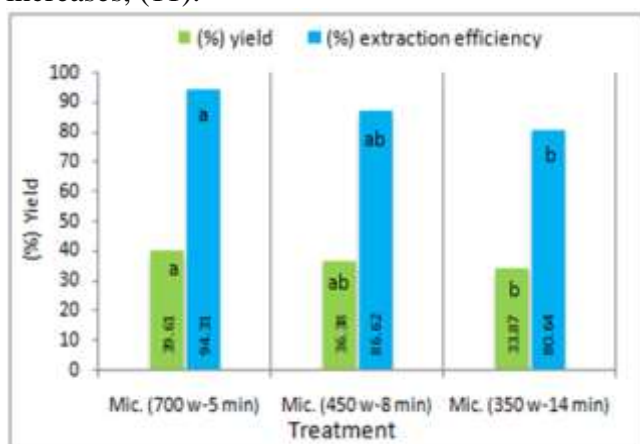
Constituents	(%) Fresh JAT	(%) JAT Powder
Moisture	77.00	6.37
Total solid	23.00	93.63
Total carbohydrates	14.20	61.74
Inulin	9.66	42.00
Pectin	3.29	14.30
Reducing sugars	0.49	2.13
Sucrose	0.76	3.31

The experiment runs in duplicate

### Effect of microwave power and extraction time on extractable inulin (%):

Figure 1 shows the effect of microwave power and extraction time on the inulin yield and extraction efficiency. The highest yield (39.61 and 36.38%) of purified inulin observed with (700W\ 5min & 450W\ 14 min) respectively, with no significant differences between them (P<0.05). However, there were significant differences in inulin yield between the 700W\

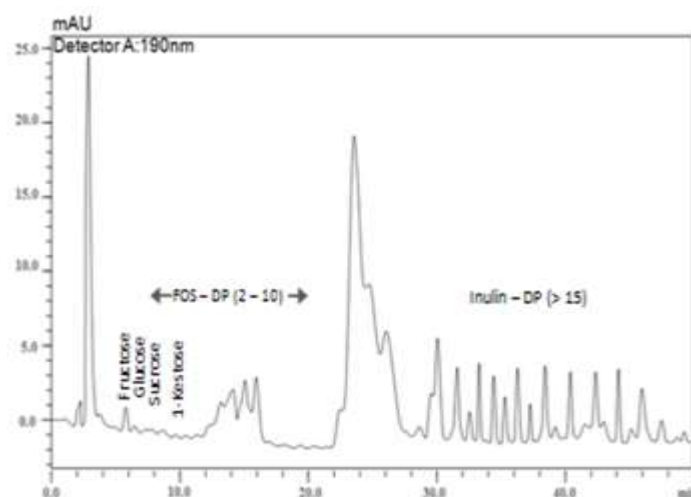
5 min. treatments and the treatment with 350W\ 14 min (33.87%). These results were close to the results of Ruo-ling (32) who found that the extraction efficiency using 700W was better than 600W and 500W, the highest yield of inulin was achieved with microwave power 700W\ 3 min. Concerning the extraction efficiency (EF), Fig. 1<sup>ab</sup> indicated that the highest EF (94.34 %) achieved with 700w/5min., followed by 450w/8min (86.62 %) and 350w/14 min (80.64%). Gaafar *et al.* (13) reported that the highest EF of inulin was noticed at 80°C\ 90 min using conventional heat reflux method. The high temperatures in closed vessels MAE resulted in improved extraction efficiency, since the motivation and solubility of analytes from the JAT powder will increase. While the surface tension and solvent viscosity will decrease as temperature increases, which will eventually improve solvent penetration, consequently the efficiency of the inulin extraction will increase, (11).



**Figure 1. Effect of microwave power and extraction time on inulin yield and extraction efficiency (%) from JAT powder**

**Carbohydrate profiles and DPn of inulin obtained by RP-HPLC**  
The purified Inulin analyzed by RP-HPLC and compared with native chicory inulin, Fig. 2 shows that the fructose is a first monomer peak appeared, followed by glucose peak and disaccharide (sucrose), then the fructooligosacchrides peaks, which including (1-kestose GF2 and nystose GF3) etc. Results of current study shows that the DP of inulin ranging from (2 - 35) unit. These results are consistent with Panchev *et al.* (27) who stated that the DP for inulin extracted from JAT ranging from (2 - 33) units. Based on the

generally accepted presumption that the retention time of a inulin units increased as the degree of polymerization increased, and that each sequential peaks appeared in chromatographic pattern, represents an inulin moiety which had a fructose more than that of the previous peak. Additionally the well resolved peaks suggesting that inulin and FOS were linear units, as expected. However, it is not possible to distinguish between Fn or GFn. In most of the published studies, each sharp peak represents inulin units either of type of GFn or Fn, they appear after of sucrose peak (7). Furthermore Fig. 2 shows that the FOS DP ranging between (2 - 10) units, begging to appear after the sucrose unit. The FOS content in inulin extracted from JAT powder reaches 16 %, this refers to high content of JAT powder from FOS. Our results are in agreement with those of Judprasong *et al.* (16) who found that the content of FOS in inulin extracted from JAT was 19.18 % as well as the percentage of reducing sugar reached to 3.22% (purified inulin). These results are consistent with Khuenpet *et al.* (18) who found that the reducing sugar content in JAT inulin was 3.45 %. The percentage of remaining carbohydrates represents the pure inulin with DP more than 10 units.

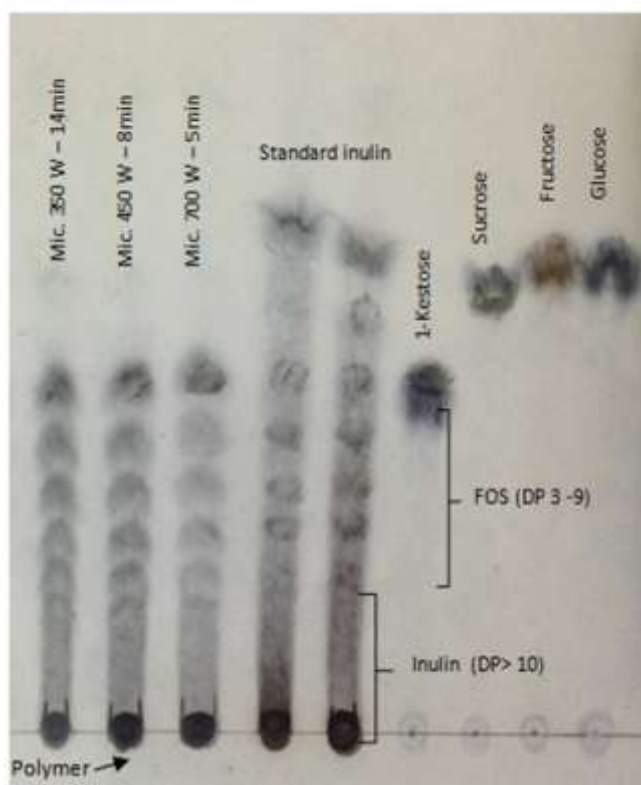


**Figure 2. High-performance liquid chromatographic of inulin extracted from JAT. (FOS) fructo-oligosaccharides. (DP), degrees of polymerization**

#### **Qualitative analysis TLC of inulin extracted from JAT powder**

TLC analysis of MAE inulin (Fig. 3), shows a polydisperse carbohydrate with different DP ranging from (3 - 9) units. The analysis of a TLC chromatogram of a homologous series of

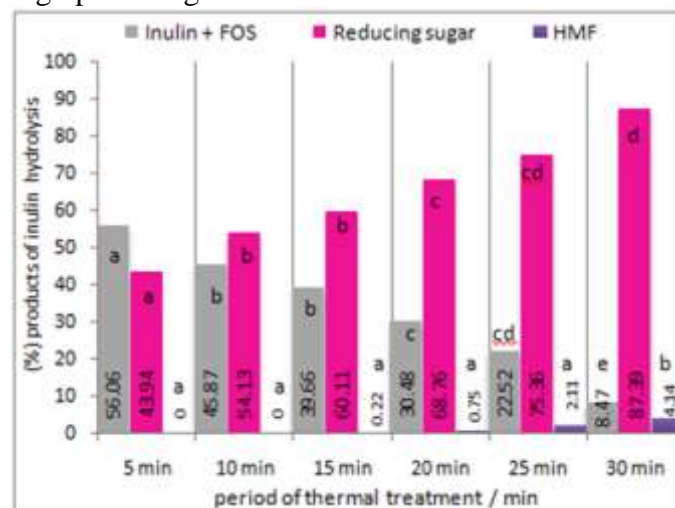
carbohydrates is based on the generally accepted assumption that each spots represents an inulin units with a certain DP value and that a higher DP leads to a decrease in the retention factor (RF). Therefore, it is assumed that each spot has one more fructose unit than the previous spot. Results of thin layer chromatography corresponded with RP-HPLC analysis in the inulin units separation, showed that the inulin extracted from JAT powder contains FOS appears as a separated spots on the glass silica gel. Then the spots overlap with each other gradually due to increasing of molecular weight, make it immobile with the mobile phase and remains close to the baseline. Our results are in line with those of Walz *et al.* (40) who found the first spots on TLC in line belongs to monosaccharides (fructose or glucose) with the lowest molecular weight, then sucrose and gradually other components of FOS or polysaccharide polymer chain with increasing molecular weight.



**Figure 3. Thin layer chromatography of inulin extraction from JAT powder. (DP, degrees of polymerization; FOS, Fructooligosaccharides).**

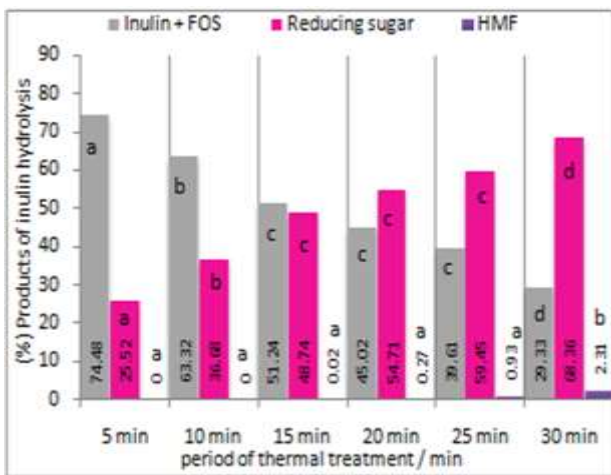
### Optimization of inulin hydrolysis to produce FOS and high fructose syrup

Acid hydrolysis of inulin was carried out using different pH values and different hydrolysis period at 90°C (Fig. 4, 5 & 6). Fig. 5 shows that the percentage of reducing sugars was increased with time from (5 - 30) min. at pH 1.5. The percentage of (remaining inulin and produced FOS mixture) significantly ( $p < 0.05$ ) decreased from (56.06% to 8.47%) during hydrolysis time (5 - 30) min. respectively. Fig. 4 also demonstrate that the percentage of reducing sugars was significantly ( $p < 0.05$ ) increased from (43.94% to 87.39%) at the reaction time (5 - 30) min. respectively, Glibowski *et al.* (14) stated that using low pH values ranged from (1 - 2) \ 90°C accelerated hydrolysis of the glycosidic bond, resulting in high percentage of free fructose.



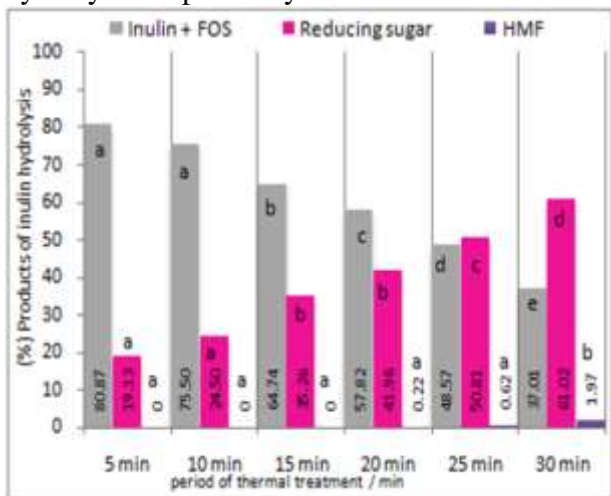
**Figure 4. Percentages of (remaining inulin & produced FOS mixture), reducing sugar and HMF during acid hydrolysis of inulin (pH 1.5 \ 90°C)**

At pH 2.5 the hydrolysis of inulin was lower than that at pH 1.5. Fig. 5 shows that the percentage of (remaining inulin and produced FOS mixture) were (74.48, 63.32, 51.24, 45.02, 39.61, 29.33) % at (5, 10, 15, 20, 25 & 30) min. respectively. While, percentage of reducing sugars was increased as the reaction time increased at this pH value. The percentage of reducing sugars was (25.52%) after 5 min. hydrolysis and it reached, (68.36%) after 30 min. of reaction time. Our results agreed with the study of Szambelan *et al.* (37) who stated that the low pH and high temperature enhanced the acid hydrolysis of inulin.



**Figure 5. Percentages of (remaining inulin & produced FOS mixture), reducing sugar and HMF during acid hydrolysis of inulin (pH 2.5\ 90°C)**

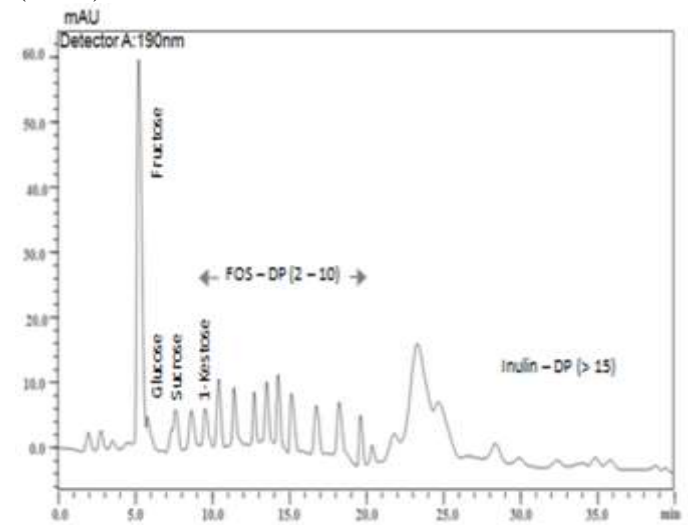
Fig. 6 shows the products of inulin hydrolysis at pH 3.00 the depolymerization were slow, the percentage of (remaining inulin and produced FOS mixture) was (80.87, 75.50, 64.74, 57.82, 48.57, 37.01) % at (5, 10, 15, 20, 25 & 30) min. hydrolysis respectively. The reducing sugars percentage were increased from (19.13% to 61.03%) at (5 - 30) min. hydrolysis respectively.



**Figure 6. Percentages of (remaining inulin & produced FOS mixture), reducing sugar and HMF during acid hydrolysis of inulin (pH 3.0\ 90°C)**

The results of acidic hydrolysis of inulin at 90 ° C and pH values (1.5, 2.5, and 3.0) shows that the amount of HMF increased as the reaction time increased. Fig. 5 shows that the highest percentage of HMF was 4.14 % at pH 1.5 after 30 min. Fig. 6 also demonstrates that the HMF not formed during the initial stages of acid hydrolysis (pH 3) at 90°C up to 20 min. of hydrolysis (0.27%) then gradually increased

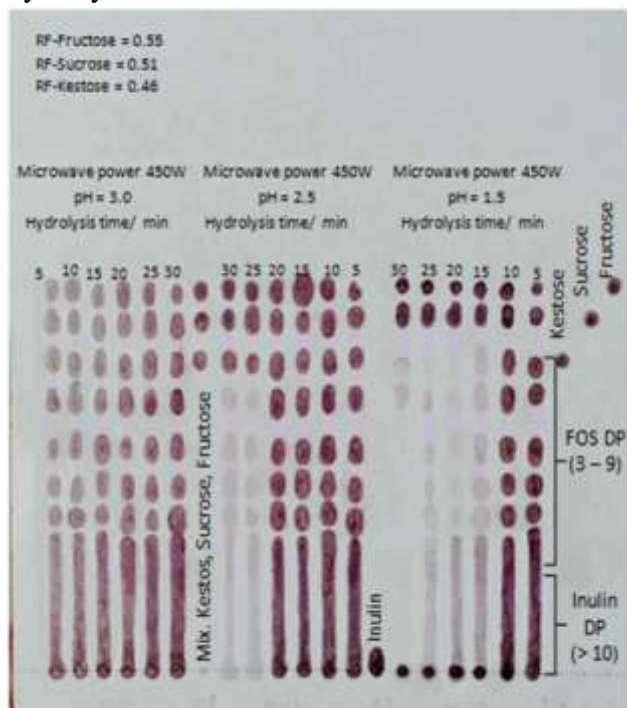
to (2.31 %) after 30 min. of reaction time. The amounts of HMF formed at pH (2.5 & 3.0) were low as compared with pH 1.5. Figure 7 demonstrates the same trend in HMF formation at the pH values. The co-generated HMF in small amount can be easily removed by adsorption with activated charcoal (1%–2%) (3, 12). RP-HPLC and TLC indicated a wide range of modulation in the qualitative profile of the partial hydrolysis products for inulin. Optimal conditions of partial hydrolysis of inulin were studied to determine highest yield of FOS and lowest amount of free fructose. The optimum result for FOS production with less amounts of reducing sugars and HMF, achieved at pH 2.5\ 90 °C\ 15 min., as presented in (Fig.7). Under these conditions, the highest FOS (degree of polymerization, 2 to 9) yield was 39%. Fontana *et al.* (12) stated that the best condition for acid hydrolysis of inulin were with citric acid catalyst (pH 2.5), temperature 85°C and reaction time 15 min, which resulted in high amount of FOS with DP ranging from (2 - 9) units.



**Figure 7. RP-HPLC profile of FOS obtained by inulin hydrolysis with citric acid at pH 2.5/15 min**

Fig. 8 shows that the more acidic environment (pH 1.5) resulted in higher hydrolysis degree of inulin as the time proceeded from (5 - 30) min. Consequently, the amount of free fructose increased, so these conditions can be applied for producing high fructose syrup. However, at pH (2.5) the hydrolysis of inulin was lower than that at (pH 1.5). The hydrolysis at (pH 2.5) recorded the highest percentage of FOS with low amount of free fructose through (5 -

30) min. The Qualitative analysis indicates an increase in the amount of FOS through initial stages (hydrolysis time 15 min) with continues increases of free fructose (up to 30 min). Whereas hydrolysis of inulin at pH 3.0 was less effective in depolymerization of inulin. Thus, for better hydrolysis of inulin at this pH<sup>5</sup> required higher temperature and longer hydrolysis times.



**Figure 8. Thin-layer chromatographic analysis of the reaction products in the hydrolysis of inulin extracted from JAT with citric acid at pH (1.5, 2.5 & 3.0) for (5, 10, 15, 20, 25, 30) min. DP, degrees of polymerization; FOS, fructooligosaccharides**

Purified inulin was prepared from JAT powder through Microwave-assisted extraction has been considered as a potential alternative to traditional solid-liquid extraction for the increasing of inulin yield from JAT powder. Optimum conditions for extracted inulin were using microwave power 700W\ 95 °C for 5 min. Under these conditions high amount of inulin could be extracted (39.61%) with better extraction efficiency (94.31 %). This inulin polymer was efficiently and partially depolymerized with aqueous citric acid to release FOS, with a degree of polymerization ranging from (2 – 9), at pH 2.5, the temperature was 85 - 90 °C, and the hydrolysis time was 5 – 30 min. There is no need for catalyst removal in most industrial

applications of the FOS syrups that are produced with citric acid.

## REFERENCES

1. AOAC, 2010. Official Methods of Analysis of Association of Official Analytical Chemists. 18<sup>th</sup> Ed., Washington, D.C., USA
2. Al-juthery, H. W. A., and S. F. Saadoun. 2018. Impact of foliar application of some micronutrients nanaofertilizer on growth and yield of jerusalem artichoke. The Iraqi Journal of Agricultural Science, 49(4): 577
3. Al-Rubaia'ay, H. F., and K. A. Shakir. 2018. Production of xylose using acid hydrolysis of wheat straw. The Iraqi Journal of Agricultural Science, 49(2): 219-227
4. Ashwell, G. 1957. In Methods in Enzymology (Colowick, S. P. and Kaplan, N. O., eds.). 3, 73-105 Academic Press, New York
5. Barta, J., and G. Y. Patkai. 2007. Chemical composition and storability of Jerusalem artichoke tubers. Acta Alimentaria, 36(2): 257-267
6. Bekers, M.; M. Grube; D. Upite; E. Kaminska; A. Danilevich, and U. Viesturs. 2008. Inulin Syrup from Dried Jerusalem artichoke. LLU Raksti 21 (315): 116-121
7. Corradini, C.; F. Bianchi; D. Matteuzzi; A. Amoretti; M. Rossi and, S. Zanoni. 2004. High-performance anion-exchange chromatography coupled with pulsed amperometric detection and capillary zone electrophoresis with indirect ultra violet detection as powerful tools to evaluate prebiotic properties of fructooligo-saccharides and inulin. Journal of Chromatography a, 1054(1-2): 165-173
8. Dias, N. S.; J. F. S. Ferreira; X. Liu, and D. L. Suarez. 2016. Jerusalem artichoke (*Helianthus tuberosus*, L.) maintains high inulin, tuber yield, and antioxidant capacity under moderately-saline irrigation waters. Industrial Crops and Products 94, 1009-1024
9. Dubois, M.; K. A. Gilles, J. K. Hamilton; P. A. Rebers, and F. Smith. 1956. Anal Chem, (26): 340- 350
10. El-Kholy, W. M. and H. Mahrous. 2015. Biological studies on bio-yoghurt fortified with prebiotic obtained from jerusalem artichoke. Food and Nutrition Sciences, 6(16): 1548- 1552



11. Eskilsson, C. S. and E. Bjorklund. 2000. Analytical-scale microwave-assisted extraction. *Journal of chromatography A*, 902(1): 227-250
12. Fontana, J. D.; A. Grzybowski; M. Tiboni, and M. Passos. 2011. Fructooligosaccharide production from inulin through partial citric or phosphoric acid hydrolyses. *Journal of medicinal food*, 14(11): 1425-1430
13. Gaafar, A.; E. Boudy, and H. El-Gazar. 2010. Extraction conditions of inulin from Jerusalem artichoke tubers and its effects on blood glucose and lipid profile in diabetic rats. *Journal of American Science*, 6(5): 36–43
14. Glibowski, P., and A. Bukowska. 2011. The effect of pH, temperature and heating time on inulin chemical stability. *Acta Scientiarum Polonorum Technologia Alimentaria*, 10(2): 189-196
15. Heding, L. G. and J. K. Gupta. 1975. Improvement of conditions for precipitation of citric acid from fermentation mash. *Biotechnology and Bioengineering*, 17(9), 1363-1364
16. Judprasong, K.; S. Tanjor; P. Puwastien, and P. Sungpuag. 2011. Investigation of Thai plants for potential sources of inulin-type fructans. *J. Food Compos. Anal.* 24, 642–649
17. Khaleel, M. M., and A. A. Thaer. 2017. Using probiotics and inulin to prolong fermented dairy products shelf life. *Iraqi Journal of Agricultural Sciences*, 48(2): 608-617
18. Khuenpet, K.; M. Fukuoka; W. Jittanit, and S. Sirisansaneeyakul. 2017. Spray drying of inulin component extracted from Jerusalem artichoke tuber powder using conventional and ohmic-ultrasonic heating for extraction process. *Journal of Food Engineering*. 194, 67-78
19. Koubaa, M.; E. Rosello-Soto; J. Sic Zlabur; A. Rezek Jambrak; M. Brncic; N. Grimi, and F. J. Barba. 2015. Current and new insights in the sustainable and green recovery of nutritionally valuable compounds from *Stevia rebaudiana* Bertoni. *Journal of Agricultural and Food Chemistry*, 63, 6835–6846
20. Ku, Y.; O. Jansen; C. J. Oles; E. Z. Lazar and J. I. Rader. 2003. Precipitation of inulins and oligoglucoses by ethanol and other solvents. *Food chemistry*, 81(1): 125-132
21. Liu, S.; X. Shi; L. Xu, and Y. Yi. 2016. Optimization of pectin extraction and antioxidant activities from Jerusalem artichoke. *Chinese journal of oceanology and limnology*, 34(2): 372-381
22. Mensink, M. A.; H. W. Frijlink; K. V. Maarschalk and W. L. J. Hinrichs. 2015. Inulin, a flexible oligosaccharide I: Review of its physic-chemical characteristics, *Carbohydrate Polymers*
23. Miller, G. L. 1959. Use of dinitrosalicylic acid reagent for determination of reducing sugar. *Analytical Chemistry*, 31, 420–428
24. Munim, A.; M. Rod; H. Tavakoli, and F. Hosseinian. 2017. An analysis of the composition, health benefits, and future market potential of the jerusalem artichoke in canada. *Journal of Food Research*. 6(5): 69-84
25. Mutanda, T.; B. S. Wilhelmi, and C. G. Whiteley. 2015. Biocatalytic conversion of inulin and sucrose into short chain oligosaccharides for potential pharmaceutical applications. *African Journal of Science, Technology, Innovation and Development*, 7(5): 371-380
26. Ngampanya, B.; S. Keayarsa; P. Jaturapiree; P. Prakobpran and S. Wichienchot. 2016. Characterization of transfructosylating activity enzyme from tubers of tropical Jerusalem artichoke (*Helianthus tuberosus* L.) for production of fructooligosaccharides. *International Food Research Journal*, 23(5): 1965-1972
27. Panchev, I.; N. Delchev; D. Kovacheva and A. Slavov. 2011. Physicochemical characteristics of inulins obtained from Jerusalem artichoke (*Helianthus tuberosus* L.). *European Food Research and Technology*, 233, 889–896
28. Paseephol, T.; D. Small, and F. Sherkat. 2007. Process optimisation for fractionating Jerusalem artichoke fructans with ethanol using response surface methodology. *Food Chemistry*, 104 (1): 73-80
29. Reiffova, K. and R. Nemcova. 2006. Thin-layer chromatography analysis of fructooligosaccharides in biological samples. *Journal of Chromatography A*, 1110(1-2): 214-221
30. Roberfroid, M. B. (2008). Prebiotics: Concept, Definition, Criteria, Methodologies, and Products. In *Handbook of prebiotics*, pp: 49-78

31. Rodriguez-Gomez, R.; I. Jimenez-Diaz; A. Zafra-Gomez and J. C. Morales. 2015. Improved sample treatment for the determination of fructooligosaccharides in milk related products by liquid chromatography with electrochemical and refractive index detection. *Talanta*, 144, 883-889
32. Ruo-ling, J. I. A. 2012. Microwave extraction of inulin from jerusalem artichoke. *Journal of Anhui Agricultural Sciences*, 23, 15-21
33. Saengkanuk, A.; S. Nuchadomrong; S. Jogloy; A. Patanothai and S. Srijaranai. 2011. A simplified spectrophotometric method for the determination of inulin in Jerusalem artichoke (*Helianthus tuberosus* L.) tubers. *European Food Research and Technology*, 233(4): 609-616
34. Sahar, R. A. 2003. Utilization of Jerusalem Artichoke Tubers and Their Extracted Inulin in Preparing Some Foods for Diabetic Patients (Doctoral dissertation, PhD Thesis, Food Science and Technology Department, Faculty of Agriculture, Kafr El-Sheikh, Tanta University, Tanta).
35. Sangeetha, P. T. 2003. Microbial Production Of Fructooligosaccharides (Doctoral dissertation, University of Mysore) pp: 237-247
36. Srinameb, B. O.; S. Nuchadomrong; S. Jogloy; A. Patanothai and S. Srijaranai. 2015. Preparation of inulin powder from Jerusalem artichoke (*Helianthus tuberosus* L.) tuber. *Plant foods for human nutrition*, 70(2): 221-226
37. Szambelan, K. and J. Nowak. 2006. Acid and enzymatic hydrolysis of Jerusalem artichoke (*Helianthus tuberosus* L.) tubers for further ethanol production. *Electronic Journal of Polish Agricultural Universities. Series Food Science and Technology*, 9(4): 690-697
38. Temkov, M.; N. Petkova; P. Denev and A. Krastanov. 2015. Characterization of inulin from *Helianthus tuberosus* L. obtained by different extraction methods—Comparative study. *Proceeding of Scientific Works of University of Food Technologies*. 5, 461-464
39. Toshkov, N.; N. Delchev, and S. Kozludzhova. 2014. Sorption characteristics of pectin isolated from Jerusalem Artichoke tubers (*Helianthus tuberosus* L.). *Ukrainian Food Journal*, 3 (2): 185-192
40. Walz, M.; D. Hagemann; M. Trentzsch; A. Weber and T. Henle. 2018. Degradation studies of modified inulin as potential encapsulation material for colon targeting and release of mesalamine. *Carbohydrate polymers*, 199, 102-108
41. White, J. W. 1979. Spectrophotometric method for hydroxymethylfurfural in honey. *J Assoc Off Anal Chem*, 62, 509-514
42. Xie, J. H.; M. Y. Xie; M. Y. Shen; S. P. Nie; C. Li and Y. X. Wang. 2010. Optimization of microwave-assisted extraction of polysaccharides from *Cyclocarya paliurus* (Batal.) Iljins-kaja using response surface methodology. *Journal of the Science of Food and Agriculture*, 90(8): 1353-1360
43. Zhou, H. 2008. Rapid determination of solanesol in tobacco by high performance liquid chromatography with evaporative light scattering detection following microwave-assisted extraction. *Journal of Chromatography B*, 835: 119-122