

## ENVIRONMENTAL PESTICIDE RESIDUES AND HEALTH BIOMARKERS AMONG FARMERS FROM GREENHOUSES OF ERBIL CUCUMBER CROPS

B. A. Othman  
Researcher

E. S. Kakey  
Prof.

Department of Biology, Faculty of Science and Health, Koya University, Koya KOY45,  
Kurdistan Region – F.R. Iraq.

[bakhtyar.abdullah@koyauniversity.org](mailto:bakhtyar.abdullah@koyauniversity.org)

[esmail.kakey@koyauniversity.org](mailto:esmail.kakey@koyauniversity.org)

### ABSTRACT

This study was aimed to determine the residual concentrations of pesticides used in greenhouse cucumber fields and their effects on the farmers that spray it. Sixteen active cucumber greenhouse fields with 96 people (75 sprayers and 21 volunteers as control) randomly had been selected. In all selected greenhouses, abamectin, thiamethoxam, pyridabin, and spiroadiclofen pesticides were used, their cucumber with leaves and groundwater collected in December 2017, March, June, and September 2018 with workers blood samples, were immediately brought to the laboratory. Results showed the occurrence of residual pesticides in the plant and groundwater samples with a highest level in the plant samples, while decreased in water samples. That is in comparison with control, sprayer blood results showed that cholinesterase activity decreased significantly meanwhile, liver function enzymes: serum glutamic oxaloacetic transaminase, glutamic pyruvic transaminase, alkaline phosphatase, direct and total serum bilirubin increased significantly. The kidney function test revealed that the mean serum urea concentration in the sprayers was considerably increased compared to the controls, while there was no significant change between the sprayers and the control serum creatinine. Slight variations in the declining number of red blood cells; however, white blood cells have significantly risen to their upper limit within normal ranges.

**Keywords:** Erbil cucumber greenhouse, pesticide residuals, serum cholinesterase activity, liver and kidney functions test, and blood cell count.

عثمان وكاكي

مجلة العلوم الزراعية العراقية - 2020: 51(5): 1357-1366

آثار المبيدات في البيئية والمشترت الحيوية الصحية بين المزارعين في الحقول البلاستيكية لمحصول الخيار في أربيل

إسماعيل صالح ابراهيم كاكي  
الاستاذ

بختيار عبد الله عثمان  
الباحث

قسم الأحياء ، كلية العلوم والصحة ، جامعة كويا ، Koya KOY45 ، إقليم كردستان F.R. - العراق .

المستخلص

استهدفت الدراسة الحالية التحري عن الاثار المتبقية المتراكمة من المبيدات المستخدمة في الحقول البلاستيكية لمحصول الخيار وتأثيراتها الصحية على المزارعين. تم اختيار ستة عشر حقلاً من البيوت البلاستيكية و96 شخصاً (75 من العاملين في رش المبيدات و 21 متطوعاً اعدت كحالة السيطرة). المبيدات المستخدمة في الحقول المحددة كانت أبامكتين و ثياميثوكسامو سبيروديكلوفن وبيريداين. جمعت نماذج من ثمرة الخيار مع اوراقها و المياه الجوفية في المزارع المختارة في ديسمبر 2017 ومارس ويونيو وسبتمبر 2018، كما جمعت عينات الدم من المزارعين العاملين في تلك الحقول. أظهرت النتائج وجود اثار للمبيدات متبقيا في محصول الخيار لتلك الحقول وكذلك في المياه الجوفية بتركيز اقل، كما أظهرت نتائج تحليل نماذج دم المزارعين العاملين برش المبيدات انخفاضاً في نشاط انزيم الكولين استريز بشكل ملحوظ، مع زيادة معنوية في إنزيمات وظائف الكبد الفوسفاتيز القلوي ALP والانزيم ناقلة امين الالانين (GPT) وناقلة امين الاسباراتات (GOT) والبليروبين ومستوى الكلي والمباشر . وأظهرت نتائج تحليل وظائف الكلي زيادة معنوية في مستوى اليوريا المصلي، مع عدم تغير نسبة الكرياتينين. كما أظهرت النتائج انخفاضاً قليلاً في عدد كريات الدم الحمراء، وارتفاعاً في عدد الخلايا الدم البيضاء بشكل كبير وضمن النطاقات الطبيعية.

الكلمات المفتاحية: خيار حقول بلاستيكية، بقايا المبيدات، نشاط انزيم الكولين استريز، تحليل وظائف الكلي والكبد، تعداد كريات دم.

## INTRODUCTION

Greenhouse environments provide a range of advantages for plant production; however, for this reason, many greenhouses also favor the growth of pests, hot, humid conditions and abundant food are perfect for the growth of pest, for these reasons, pest problems often grow faster and are more severe in enclosed systems. In the management of greenhouse pests, pesticides are essential tools. However, applications in enclosed and poorly ventilated areas increase the risk of exposure of workers and increase the risk of exposure, especially by inhalation (5). Greenhouse cucumber plantations are considered to be still important vegetable crop grown on a large scale in Erbil City, but many insects attack the plant and then use insecticides commonly. Abamectin, Thiamethoxam, Pyridabin, and Spirodiclofen were used in most greenhouse plants to control the various insect of greenhouse cucumbers (14). Excessive use of pesticides has multiple adverse effects on the environment, and the health of individuals who were directly or indirectly exposed to it, which attracted attention in scientific disciplines, such as medicine, environmental studies, development studies, although the literature on the issue is going to grow. One of Erbil's main problems is the lack of an analysis based on empirical data on the attitudes of local farmers. Landowners are typically not well informed about the methods of chemical selection and application. Also, information on the exact doses of pesticides used by companies in terms of region and product type is severely lacking. In some cases, and some places, there is even a lack of willingness to apply the necessary dosage (16). Finally, the damages caused by excessive and incorrect chemical use to the environment with its health impacts on human and animal health was not recorded by authorized institutions such as the Government departments of Environment and Agriculture (12). Pesticides have been and continue to be useful against agricultural pests, since their use has led to numerous health risk effects on non-target species, especially humans. In farm-related projects, occupational exposure to pesticides has regularly associated with increased risk of developing some chronic diseases. Biomarkers such as hematological

parameters, liver, kidney function tests, and BChE activities could be evaluated to detect the hazardous impacts of pesticides. As far as we understand, there were no investigations into the health impacts on farm employees in Erbil. The objective of this study was to evaluate the bioaccumulation of pesticides in the plant and groundwater as well as assessing their exposure and toxicity to blood cell variables, liver, kidney functions test and monitor the activity of BChE in Erbil greenhouse cucumber farmer sprayers.

## MATERIALS AND METHODS

In a commercial greenhouse in the agricultural fields of Erbil (plain), cucumber crops were grown. The cucumber with its leaf and groundwater samples (within a depth of 48 - 165m from the same farm used for irrigation) within sixteen active cucumber greenhouse fields in the north of Erbil have collected after 2 months of growing cucumber, the spacing within the row was 60 cm, and the spacing of the plant was 25 cm with 28 - 45 relative humidity. Samples were collected in polyethylene bags and groundwater bottles in December 2016, March, June and September 2017, properly stored at (4°C) and transported to the laboratory for further analysis.

### Collection and analysis of blood samples

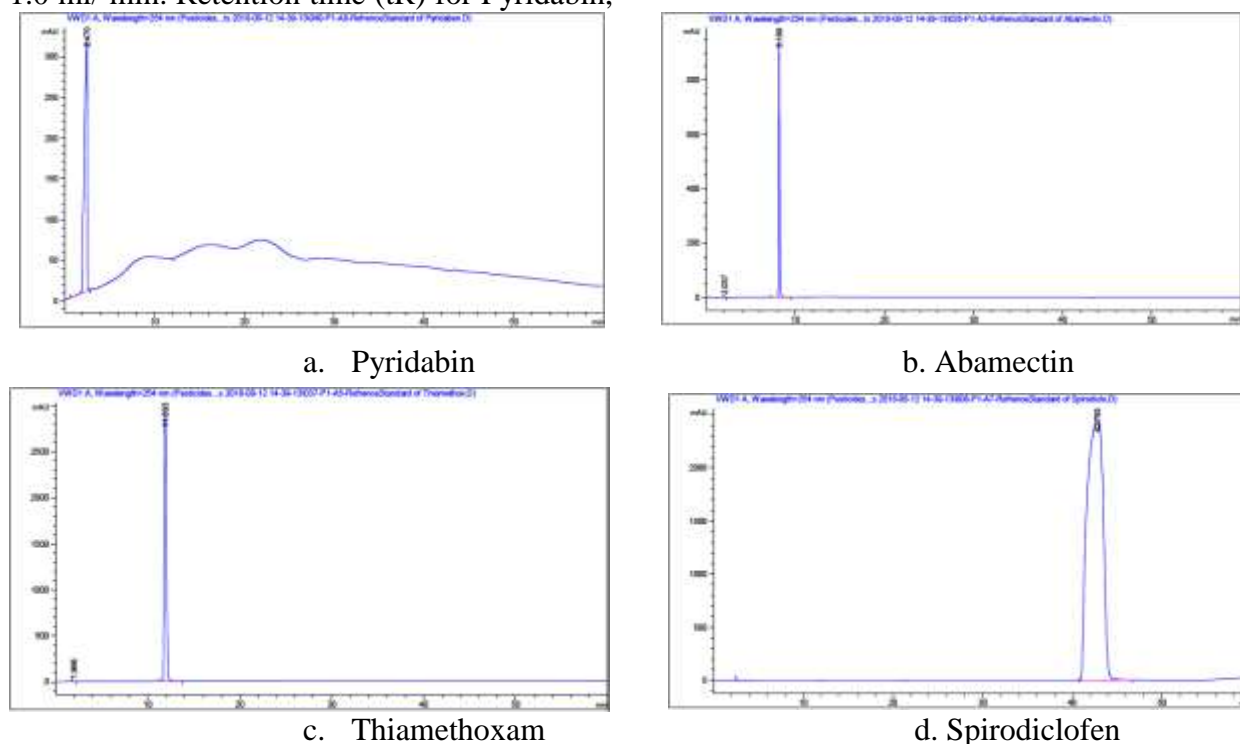
Blood samples were collected and quickly brought to the research laboratory for cholinesterase activity (BChE), direct bilirubin, total bilirubin, serum glutamic oxaloacetic transaminase (GOT), glutamic pyruvic transaminase (GPT), alkaline phosphatase (ALP), Serum Urea and Creatinine, red blood cell (RBC) and white blood cell (WBC) analysis. Blood samples were analyzed using complete blood count (CBC), and the serum was analyzed by Biolyzer 300 to determine ALP, GOT, GPT, Total and Direct Bilirubin, Urea and Creatinine after 5 min centrifugation at 5000 rpm of the remaining blood and BChE was established by the fluorescent activity kit Butyrylcholinesterase.

### HPLC Instrumentation and extraction of environmental samples

100 µl of water and cucumber plant juice (cucumber with leaves was already cut and chipped with a juicer) and 300 µl acetonitrile also added to a 2 ml Eppendorf tube, and the

sample was centrifuged at 12000 rpm for 10 minutes. The solvent phase was then collected and diluted 1:1 in a 200 µl HPLC vial (90 µl solvent phase, 90 µl water). Through using Agilent 1260 infinity HPLC system w/1290 infinity thermostat, pyridabin, abamectin, thiamethoxam, and spiroadiclofen insecticides were determined using stainless steel column C18 (300 mm long, 4.6 mm) packed with silica gel for chromatography (5µm particle size) at column temperature 30°C. Acetonitrile – water was selected using a UV wavelength of 254 nm as a mobile phase at a flow rate of 1.0 ml/ min. Retention time (tR) for Pyridabin,

Abamectin, thiamethoxam and Spiroadiclofen pesticide detection were 2,455, 8,187, 11,893 and 42,793 minutes respectively and compared to a known standard (Figure:1) under the same conditions. Based on the peak area, the quantities were calculated. 20 µl injection volumes were used in all experiments, and LC solution software controlled the chromatographic device. The recorded data during the entire study period were evaluated statistically using the accessible software programs (GraphPad Prism 8.1.2 and Microsoft Excel Professional Edition 2013).



**Figure 1. Chromatograms of a. Pyridabin, b. Abamectin, c. Thiamethoxam, and d. Spiroadiclofen standards**

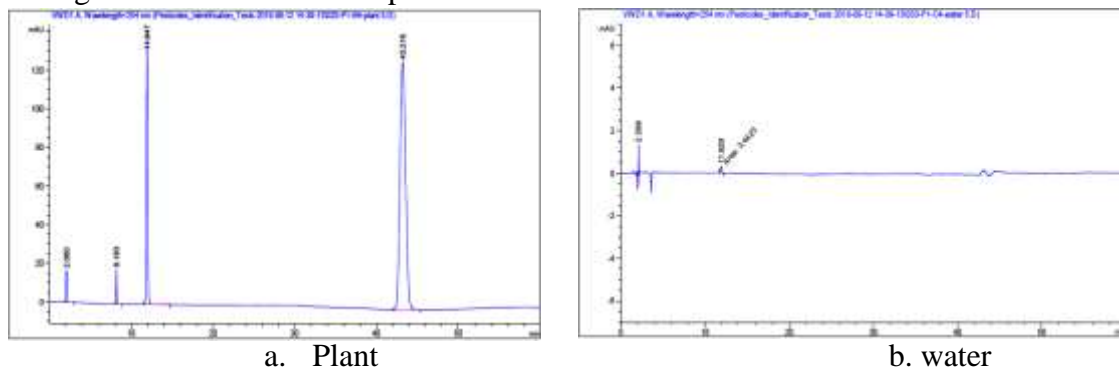
## RESULTS AND DISCUSSION

The HPLC technique used to identify and quantify residues of pyridabin, abamectin, thiamethoxam, and spiroadiclofen. Thirty-one samples had highest residue concentrations from 128 environmental samples, most frequently noticed thiamethoxam in plant and groundwater samples, followed by pyridabin, spiroadiclofen, and abamectin. Surprisingly, abamectin concentration was identified in some plant samples and undetected in any water samples (Figures 2 and 3), with statistically significant differences between plant and water samples ( $P < 0.001$ ). The concentration and amount of pesticide residue in the studied samples might have altered

based on the types of pesticides, half-life, bioaccumulation trend, and biodegradation properties. Overall, Pyridabin pesticide residue concentration was measured in 75.0% of the plant and groundwater samples, the highest level was ranged from 18.918 and 1.086 ppm to N.D as a lowest concentration with mean of  $7.053 \pm 0.164$  and  $0.38 \pm 0.01$  for plant and groundwater samples respectively. It was revealed that 90.6% of the plant and water samples determined the concentration of thiamethoxam residues and its higher range was established in plant samples within the studied period, highest concentration ranged from 33.647 and 1.633 ppm to N.D, with a mean of  $11.25 \pm 2.74$  and  $1.63 \pm 0.13$

respectively for the plant and groundwater samples. The elevated levels of spiroadiclofen ranged from 12.83 and 0.85 ppm to N.D and with a mean concentration of  $3.985 \pm 1.13$  and  $0.205 \pm 0.01$  in the plant and groundwater samples, respectively. Residues of spiroadiclofen pesticide were detected in 65.6 % of the plant and water samples and their higher range determined in plant samples within the period of study. While residues of abamectin pesticides were detected in 15.6 % of plant samples, there were no residues of abamectin pesticides detected in groundwater samples were ranged from 5.913 ppm to ND with a mean of  $0.1 \pm 0.005$  in plant samples, and non- detected in groundwater samples during the studied period (Figure 3). The remaining and detection of pesticides in

selected samples during the study period were consistent with the structure and formation of pesticides that abamectin pesticide was rapidly reduced due to photo-degradation and the action of abamectin-degrading enzymes that groundwater was not reached, while other three pesticides reached groundwater. The same results had been obtained by (19, 10, 28 and 18). According to questioner lists, most sprayers complained about fatigue, headache, and loss of appetite for nausea, dizziness, excessive sweating and salivation, blurred vision with excessive watering, muscle weakness, all signs and symptoms of pesticide exposure. While spraying the pesticides, no precautions were taken by workers when spraying pesticides.



**Figure 2. HPLC Chromatogram sample of Pesticides residues in (a) plant and (b) water sample**

BChE activity is a reliable biomarker of pesticide exposure and is generally used to estimate pesticide toxicity in occupational and clinical toxicology, and experts recommended that BChE activity be less than 60% of the reference value as a critical value of pesticide infection (3). According to the results in (Table 1 and figure 4) BChE activity significantly decreased at ( $p < 0.001$ ) in sprayers blood samples in comparison to control groups with a mean concentration of ( $6.705 \pm 0.325$ ) to ( $12.08 \pm 0.575$ ), which was highly correlated with the intensity and duration of exposure during spray and its lower recovery rates of BChE (1, 2). In the present study, the decrease in serum BChE in pesticide sprayers was mainly due to infections with pesticides, confirming reports that nicotine pesticide compounds inhibit BChE activity (8 and 17). The main effects of pesticides are on channels of sodium and chloride as they modify the gating

characteristics of voltage-sensitive sodium channels to delay their closure, these agents increase the influx of  $\text{Na}^+$  into synaptic terminals and create a hyperpolarized and hyperirritable synaptic membrane that in turn increases the release of the acetylcholine neurotransmitters. The results were utterly consistent with (6) and (3). According to investigated results there were significantly relation between BChE activities in exposed sprayers and other variables at ( $r = -0.65$ ,  $p < 0.01$ ;  $-0.797$ ,  $p < 0.001$ ;  $-0.721$ ,  $p < 0.01$ ;  $-0.718$ ,  $p < 0.01$ ;  $-0.798$ ,  $p < 0.001$ ;  $-0.459$ ,  $p < 0.05$ ) for D. bilirubin, T. bilirubin, ALP, GOT, GPT and WBC respectively. While non-significantly with creatinine, urea, and RBC (table 2).

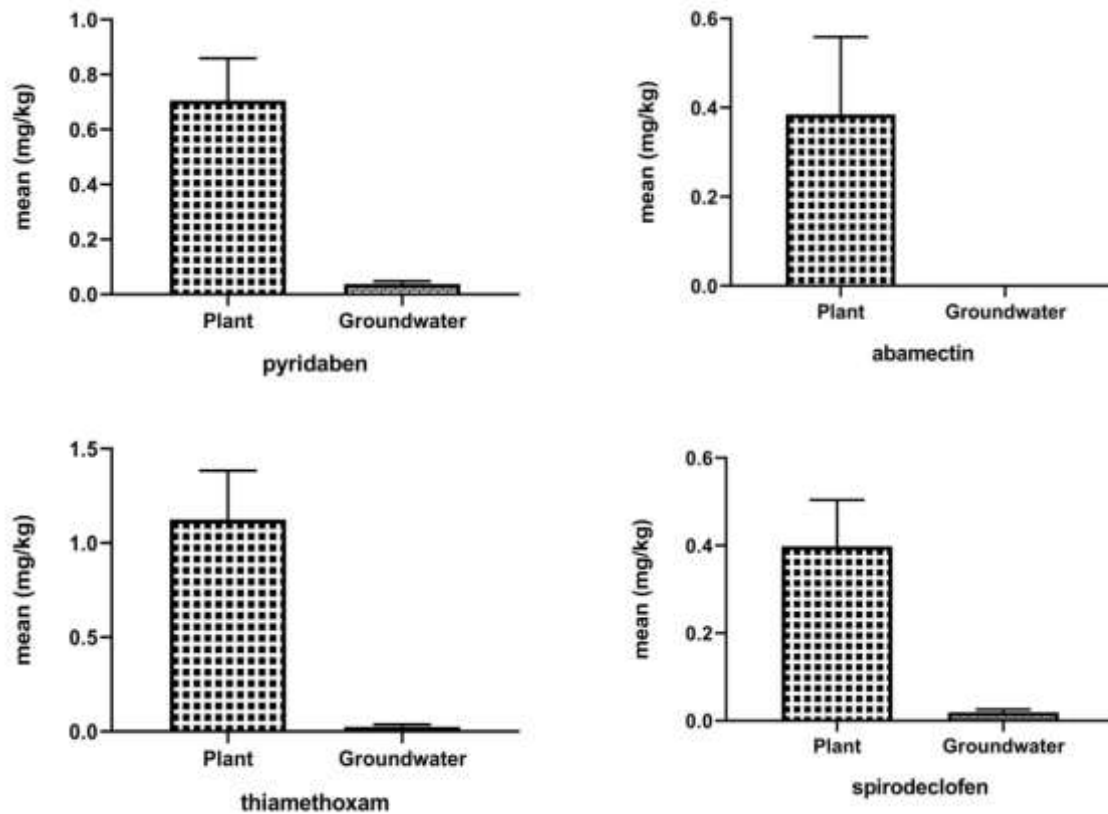


Figure 3. The mean concentration of a. pyridabin, b. Abamectin, c. Thiamethoxam, and d. spiroticlofen pesticide residues within the plant and water during the studied period

Table1. Liver and kidney function variables with a blood cell count of sprayer and control subjects (mean± SE).

Parameters	Sprayers	Control	P value
BChE (ng/ml)	6.705 ± 0.325	12.08 ± 0.575	0.0001
D. Bilirubin (mg/dl)	0.483 ± 0.025	0.214 ± 0.0217	0.0001
T. Bilirubin (mg/dl)	1.526 ± 0.0495	0.6795 ± 0.0484	0.0001
ALP (U/l)	144.9 ± 3.393	46.46 ± 7.825	0.0001
GOT (U/l)	56.54 ± 1.817	24.17 ± 1.579	0.0001
GPT (U/l)	56.87 ± 2.019	20.89 ± 2.41	0.0001
RBC (10 <sup>12</sup> /l)	4.255 ± 0.0728	4.67 ± 0.11	0.01
WBC (10 <sup>9</sup> /l)	8.26 ± 0.239	6.208 ± 0.186	0.0001
Urea	37.07 ± 1.406	28.98 ± 1.794	0.005
Creatinine	0.9619 ± 0.0433	0.9124 ± 0.043	0.5

Exposure to pesticides and liver functions among sprayers hepatotoxicity were monitored through quantitative analyses of serum GPT, GOT, ALP, direct, and total bilirubin used as biochemical markers of liver damage among farm workers. According to present investigated outcomes, the liver function enzymes were significantly increased at statistically different levels (P<0.001) in exposed sprayers compared to the control group during the studied period (Table 1 and Figure 4). Pesticides are hepatotoxic, mostly based on animal studies, increased liver

weight, and documented enzyme induction in animals that have been exposed to pesticides for a long time, especially those with higher chlorine due to their long half-life and bioaccumulation properties (26). The higher levels of liver enzymes (GOT, GPT, ALT, direct, and total bilirubin) at the most upper exposure sprayers were our most consistent findings for blood biochemistry datasets. On the other hand, there were significantly correlation between D. bilirubin at (r= 0.756, p< 0.001; 0.428, p< 0.05; 0.416, p< 0.01; 0.417, p< 0.05, -0.684, p< 0.01; 0.405, p<

0.05) with T. bilirubin, ALP, GPT, urea, RBC and WBC respectively. While non-significantly with creatinine and GOT. ALP have significantly correlation ( $r= 0.834, p <0.001$ ;  $0.807, p < 0.001$ ;  $-0.604, p <0.05$ ;  $0.542, p <0.01$ ) with GOT, GPT, RBC and WBC respectively. While non-significantly with creatinine and urea. Also, GOT have significantly correlation ( $r= 0.873, p <0.001$ ;  $-0.587, p <0.05$ ;  $0.588, p <0.001$ ) with GPT, RBC and WBC respectively. While non-significantly with creatinine and urea. GPT have significantly correlation ( $r= 0.834, p <0.001$ ;  $0.807, p < 0.001$ ;  $-0.604, p <0.05$ ;  $0.542, p <0.01$ ) with GOT, GPT, RBC and WBC respectively. While non-significantly with creatinine and urea (Table 2). A positive association between OC pesticides and liver enzymes was already previously reported, indicating that these enzymes are an early and sensitive biomarker of exposure to pesticides, although levels were observed within normal clinical parameters, same observations have been reported by (23, 7 and 15). Increasing

levels of bilirubin may be attributed to prolonged exposure to pesticides that have disturbed the healthy red blood cell metabolism, affected hepatic dysfunction and increased blood bilirubin levels, resulting in hyperbilirubinemia that may result from the production of more bilirubin than healthy liver, as indicated by other researchers (4, 22 and 3). The observations showed that there were significantly decreases at ( $p <0.01$ ) in RBC counts between sprayers in comparison to control group blood samples. However, results showed an increase in the WBC count to the upper limit with a statistically significant difference in sprayer blood samples ( $P <0.001$ ) compared to control blood samples (Table 1 and figure 4) with significantly correlation (Table 2) between RBC and WBC at ( $r = -0.532, p <0.05$ ). Our outcome, contrary to the previous finding, that there were no significant differences between hematological parameters in exposed pesticides and control groups (26, 11, 27 and 3).

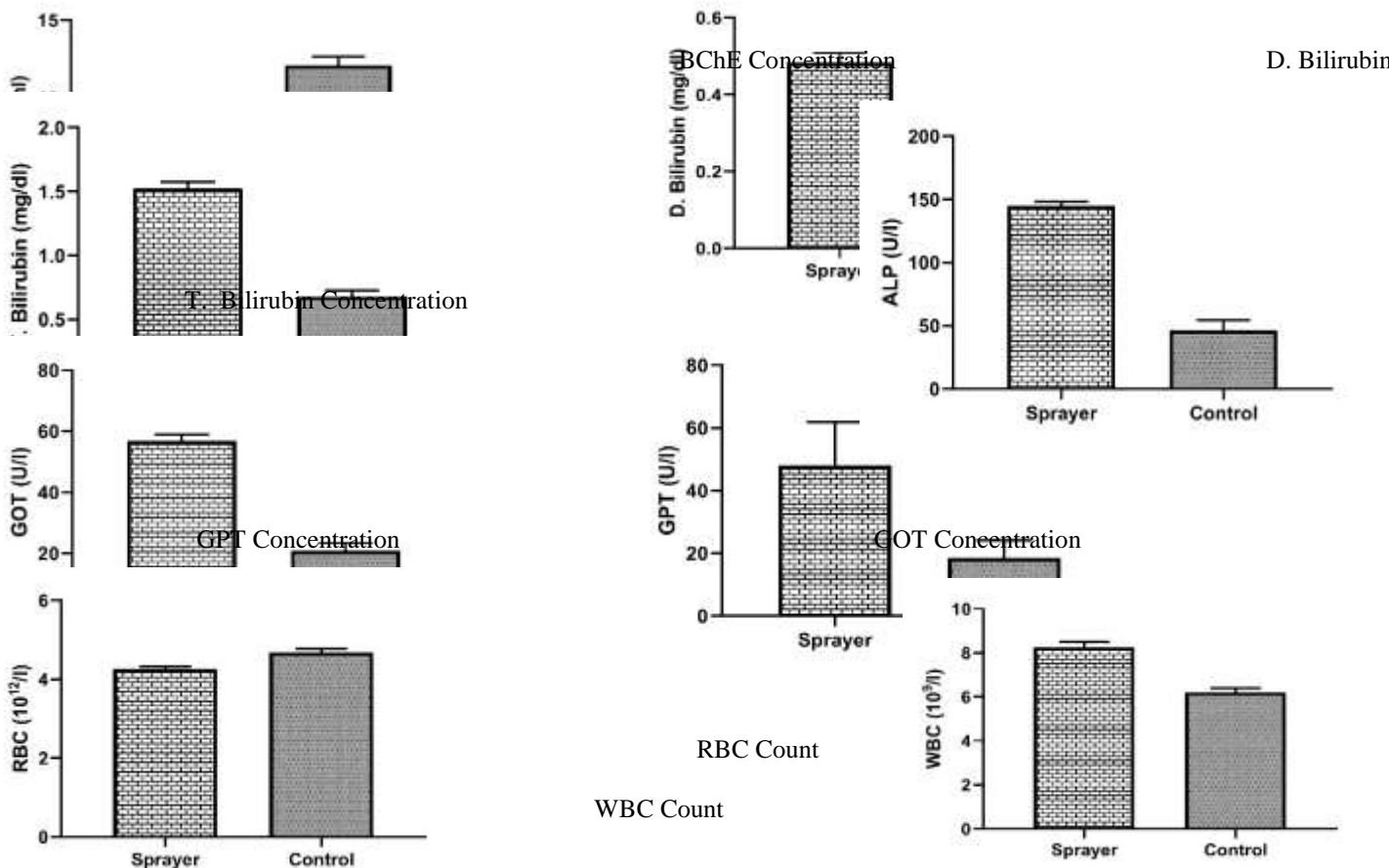
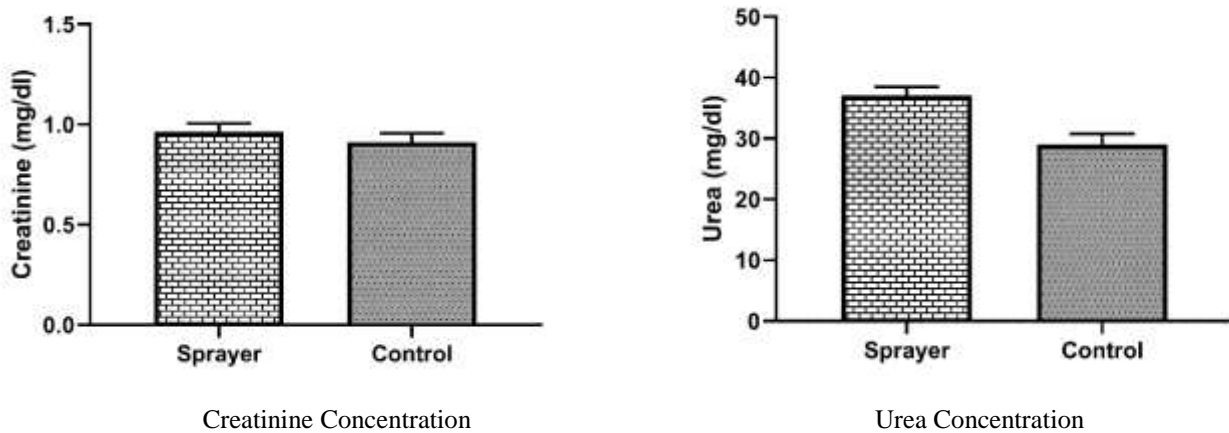


Figure 4. mean concentrations of 1. BChE, 2. D. bilirubin, 3. T. bilirubin, 4. ALP, 5. GOT, 6. GPT, 7. RBC, and 8. WBC within the serum of sprayers and control groups during the studied period

As shows in (Figure 5) during the studied period, the mean serum urea concentrations of the sprayer were significantly increased at ( $P < 0.01$ ) compared to controls (Table 1). The longer the duration of the work, the higher percentage of urea concentration increases were observed and in fact, mean concentrations of serum sprayers creatinine slightly fluctuated non-significantly compared to controls group. Previous studies have shown significant variations in the concentration of serum urea and creatinine in farmers exposed to pesticides, which are inconsistent with our investigation results (25 and 13). Statistical correlation results revealed that creatinine have significantly correlation ( $r = 0.373$ ,  $p < 0.01$ ; -

$0.718$ ,  $p < 0.001$ ) with urea and WBC respectively and non-significantly with RBC. While, Urea have significant correlation with ( $r = -0.677$ ,  $p < 0.001$ ) with RBC and non-significantly with WBC (Table 2). Serum levels of urea and creatinine in pesticide-exposed farmers are of clinical value; urea is formed by amino acid deamination in the liver and then transported through the blood to the kidneys where it is excreted with urine. According to our research findings, excessive exposure to pesticides probably resulted in cytotoxic changes in hepatic and renal biochemical markers which were positively correlated with exposure to pesticides as indicated by (24, 20, 21, 29 and 3).



**Figure 5. Mean concentration of a. creatinine and b. urea within the serum of sprayer and control groups within the studied**

## CONCLUSIONS

The present study revealed that pyridabine, abamectin, thiamethoxam and spiroticlofen pesticides found in groundwater and sprayed greenhouse cucumber. Studied pesticide residues had an impact on both the BChE activity and certain enzymes (GOT, GPT, ALP, complete and direct bilirubin). Significant changes in serum urea observed, with small fluctuations in creatinine. WBC and RBC had already altered significantly.

According to the questioner lists, most farmers in the studied fields were unaware of the hazards induced by inappropriate handling of pesticides. We suggest increasing awareness among farmers about the use of proper protective measures while handling and managing pesticide. Farmers must be encouraged to reduce, if not eliminate, the use of pesticides by offering incentives to assist farmers.

**Table 2. Illustrate Pearson's correlation coefficient among liver, kidney function test, and blood cell count variables of sprayer and control subjects.**

Parameters	BChE	D. Bilirubin	T. Bilirubin	ALP	GOT	GPT	Creatinine	Urea	RBC	WBC
BChE	1									
D. Bilirubin	-0.641**	1								
T. Bilirubin	-0.797***	0.756***	1							
ALP	-0.721**	0.428*	0.578**	1						
GOT	-0.718**	0.416	0.683***	0.834***	1					
GPT	-0.798***	0.416**	0.692***	0.807***	0.873***	1				
Creatinine	-0.100	-0.143	-0.142	-0.091	-0.186	0.202**	1			
Urea	-0.433	0.417*	0.367*	0.279	0.164	0.452**	0.373**	1		
RBC	0.485	-0.684**	-0.617*	-0.604*	-0.587*	-0.654**	0.106	-0.677***	1	
WBC	-0.459*	0.405*	0.446*	0.542**	0.588***	0.321	-0.718***	0.055	-0.532*	1

\* Correlation is significant at the 0.05 level (2-tailed).

\*\* Correlation is significant at the 0.01 level (2-tailed)

\*\*\* Correlation is significant at the 0.001 level (2-tailed).



## REFERENCES

1. Al-Ghais S. M., 2013. Acetylcholinesterase, glutathione and hepatosomatic index as potential biomarkers of sewage pollution and depuration in fish. *Marine pollution bulletin*. 15; 74 (1):183-6
2. Araoud M, F. Neffeti, W. Douki, H. B. Hfaiedh, M. Akrouf, M. F. Najjar and A. Kenani, 2011. Factors influencing plasma butyrylcholinesterase activity in agricultural workers. In *Annales de biologie clinique* (Vol. 69, No. 2, pp. 159-166).
3. Aroonvilairat S, W. Kespichayawattana, T. Sornprachum, P. Chaisuriya, T. Siwadune and K. Ratanabanangkoon, 2015. Effect of pesticide exposure on immunological, hematological and biochemical parameters in Thai orchid farmers—a cross-sectional study. *International journal of environmental research and public health*. 12 (6):5846-61
4. Awad O.M., S. A. El-Fiki, R. A. Abou-Shanab, N. M. Hassanin and AbdEl-Rahman, 2014. Influence of exposure to pesticides on liver enzymes and cholinesterase levels in male agriculture workers. *Global NEST J*. Jan 1; 16:1006-15.
5. Bessin R, J. H. Lht and C. N. William, 1997. *Greenhouse Pesticides and Pesticide Safety*. University of Kentucky Cooperative Extension Service: 1-0.
6. Dalvie M.A. and L. London, 2006. The impact of aerial application of organophosphates on the cholinesterase levels of rural residents in the Vaalharts district, Northern Cape Province, South Africa. *Environmental research*. 1; 102 (3):326-32.
7. Dewan A., V. K. Bhatnagar, M. L. Mathur, T. Chakma, R. Kashyap, H. G. Sadhu, S. N. Sinha and H. N. Saiyed, 2004. Repeated episodes of endosulfan poisoning. *Journal of Toxicology: Clinical Toxicology*. 1; 42(4):363-9
8. El-Nahhal Y., 2016. Biochemical changes associated with long term exposure to pesticide among farmers in the Gaza Strip. *Occupational Diseases and Environmental Medicine*. 19; 4 (03):72.
9. European Food Safety Authority (EFSA), A. Brancato, D. Brocca, C. De Lentdecker, Z. Erdos, L. Ferreira, L. Greco, S. Jarrah, D. Kardassi, R. Leuschner and C. Lythgo, 2018. Review of the existing maximum residue levels for myclobutanil according to Article 12 of Regulation (EC) No 396/2005. *EFSA Journal*; 16(8):e05392
10. Fantke P, B. W. Gillespie, R. Juraske and O. Jolliet, 2014. Estimating half-lives for pesticide dissipation from plants. *Environmental science & technology*. 11; 48 (15):8588-602.
11. Gaikwad A.S., P. Karunamoorthy, S. J. Kondhalkar, M. Ambikapathy and R. Beerappa, 2015. Assessment of hematological, biochemical effects and genotoxicity among pesticide sprayers in grape garden. *Journal of occupational medicine and toxicology*. Dec; 10 (1):11
12. Gün S and M. Kan, 2009. Pesticide Use in Turkish Greenhouses: Health and Environmental Consciousness. *Polish Journal of Environmental Studies*. 1; 18 (4).
13. Haghizadeh M.H., M. Salehcheh, S. J. Emam, S. M. Jazayeri and N. Bakhtiari, 2015. Biochemical effects of pesticides commonly used among agricultural workers among arabs of southwestern, Iran. *Trends in Life Sciences*. 4(3):420-5
14. Hassanzadeh N, A. Esmaili Sari and N. Bahramifar, 2012. Dissipation of imidacloprid in greenhouse cucumbers at single and double dosages spraying. *J. Agr. Sci. Tech*. 14(3):557-64.
15. Ibrahim K.S., N. M. Amer, E. M. El-Tahlawy and H. M. Allah, 2011. Reproductive outcome, hormone levels and liver enzymes in agricultural female workers. *Journal of Advanced Research*. 1; 2 (2):185-9.
16. Isin S and I. Yildirim, 2007. Fruit-growers' perceptions on the harmful effects of pesticides and their reflection on practices: The case of Kemalpaşa, Turkey. *Crop protection*. 1; 26 (7):917-22.
17. Jamal F., S. Q. Haque, S. Singh and M. D. Arshad, 2016. The Influence of Pesticides on Hepatic and Renal Functions in Occupational Sprayers of Rural Malihabad, Lucknow (India). *Toxicol open access*; 1 (106):2
18. Jiandani, Muhammad Ashraf., 2015. "Soil adsorption of pesticides used on vegetables in southern Sindh." PhD diss., University of Sindh Jamshoro, Sindh
19. Jodeh S, S. Al Masri, M. Haddad, O. Hamed, D. Jodeh, R. Salghi, S. Radi, J. Amarah, F. El-Hajjaji and I. Warad, 2016.

- Evaluation of potential Residue of Imidacloprid and Abamectin in Tomato, Cucumber and Pepper Plants after Spraying using High Performance Liquid Chromatography (HPLC). *J. Mater. Environ. Sci.* Vol.7, No.3:1037-1047
20. Khan A., L. Ahmad and M. Z. Khan, 2012. Hemato-Biochemical changes induced by pyrethroid insecticides in avian, fish and mammalian species. *International Journal of agriculture & biology.* Oct 1; 14 (5).
21. Khan D.A., I. Hashmi, W. Mahjabeen and T. A. Naqvi, 2012. Monitoring health implications of pesticide exposure in factory workers in Pakistan. *Environmental monitoring and assessment.* Sep 1; 168 (1-4):231-40
22. Khwaja S., R. Mushtaq, R. Mushtaq, M. Yousuf, M. Attaullah, F. Tabbassum and R. Faiz, 2013. Monitoring of biochemical effects of organochlorine pesticides on human health. *Health.* Aug 1; 5 (08):1342
23. Podprasart V, J. Satayavivad, S. Riengrojpitak, P. Wilairat, W. Wananukul, P. Chavalittumrong, S. Chivapat and K. Yoovathaworn, 2007. No direct hepatotoxic potential following a multiple-low dose paraquat exposure in rat as related to its bioaccumulation. *Toxicology letters.* 15; 170 (3):193-202
24. Reddy P.B and J. Kanojia, 2012. Clinico pathological effects of pesticides exposure on farm workers. *Hemoglobin (g/dL);* 12 (1.2):13-8.
25. Ritu A., N. Tripathi, A. Choudhary and S. Agnihotri, 2013. Biochemical alterations among spray farmers due to chronic exposure to chlorpyrifos and organophosphate pesticides. *Int J Curr Microbiol App Sci.* Vol. 2, No.11: 415-418
26. Serdar B, W. G. LeBlanc, J. M. Norris and L. M. Dickinson, 2014. Potential effects of polychlorinated biphenyls (PCBs) and selected organochlorine pesticides (OCPs) on immune cells and blood biochemistry measures: a cross-sectional assessment of the NHANES 2003-2004 data. *Environmental Health.* 13 (1):114
27. Sudjaroen Y., 2017. Comparison of biochemical, hematological parameters and pesticide expose-related symptoms among organic and non-organic farmers, Singburi, Thailand. *Asian Journal of Pharmaceutics (AJP): Free full text articles from Asian J Pharm.* Apr 13; 11(01).
28. Vineyard C. j. and S. Stewart, 2017. Microbial degradation of neonicotinoid insecticides in the soil and potential implication on thrips (Thysanoptera: Thripidae) control in cotton. *Journal of Cotton Science.* 1; 21 (2):128-33.
29. Yassin M. M. and T. A. AL-Shanti, 2016. Effect of pesticides on kidney function and serum protein profile of farm workers in Gaza Strip. *Annals of Medical and Biomedical Sciences.* 2(1).